

Occurrence of *Hypurus bertrandi* (PERRIS) (Coleoptera, Curculionidae, Ceutorhynchinae) in the Philippines

Hiraku YOSHITAKE¹⁾ and Sheryl A. YAP²⁾

¹⁾Institute for Agro-Environmental Sciences, NARO, 3–1–3 Kannondai, Tsukuba, Ibaraki, 305–8604 Japan

²⁾Institute of Weed Science, Entomology and Plant Pathology, College of Agriculture and Food Science, University of the Philippines Los Baños, Los Baños, Laguna, Philippines 4031

Portulaca oleracea L. (common purslane), belonging to the family Portulacaceae, is a widespread species by means of artificial introductions (CABI, 2017). To date, several herbivorous insects have been known to be associated with this plant, including the purslane leaf-mining weevil, *Hypurus bertrandi* (PERRIS, 1852) (Coleoptera, Curculionidae, Ceutorhynchinae) (MORIMOTO, 1984). It is a sub-cosmopolitan weevil occurring in Africa, Europe, Asia, Australia, the Pacific, and America (MCFADYEN, 1994; COLONNELLI, 2004). In addition, MCFADYEN (1994) strongly suggested that this weevil occurs in the Philippines, based on the linear mines of weevil larvae he observed in the common purslane leaves in Los Baños, Laguna, Luzon. As far as we know, however, its occurrence in the Philippines has not been confirmed until now. Recently, we had an opportunity in Los Baños to find *P. oleracea* with many leaf-mines and were able to collect many weevil larvae and one adult of *H. bertrandi* on the plant. In this paper, we report the first record of *H. bertrandi* for the country. Before going further, the first author would like to thank ENZO COLONNELLI (Rome) for his kind help with literature. Also, the authors would like to thank the Entomology section laboratory, Institute of Plant Breeding, College of Agriculture and Food Science, University of the Philippines Los Baños for allowing us to collect the weevil in the area.

Hypurus bertrandi (PERRIS, 1852)

(Figs. 1–5)

Ceutorhynchus bertrandi PERRIS, 1852, 183 (type locality: “de Mont-de-Marsan à Sanguinet”).

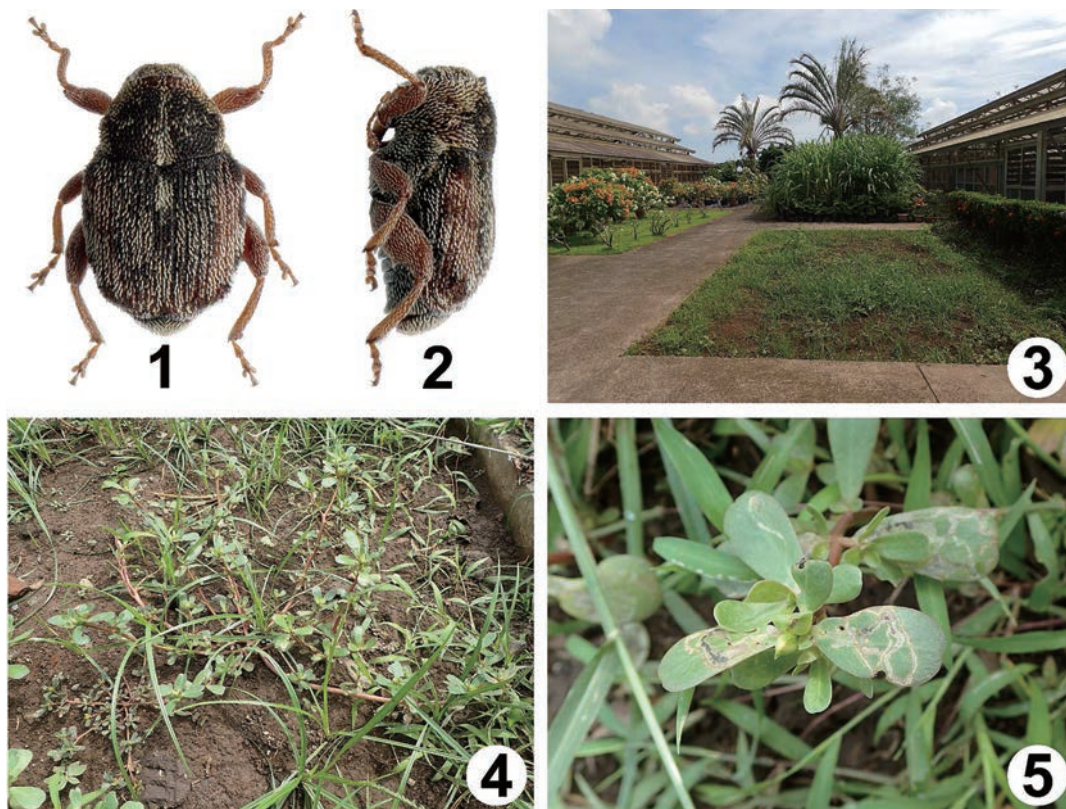
Hypurus bertrandi: REY, 1882, 189 (establishment of the new genus *Hypurus* for *C. bertrandi*). — MCFADYEN, 1994, 43 (record from Australia & possible occurrence in the Philippines).

See COLONNELLI (2004) for other synonymy.

Specimens examined. Philippines: Luzon. 1 male adult and many larvae, Laguna, Los Baños, UPLB-CAFS Institute of Plant Breeding, 13.VII.2017, H. YOSHITAKE leg., on *P. oleracea*.

Distribution. Africa (Cape Verde, Egypt, Morocco, Madagascar, Nigeria & Tunisia), Europe (Croatia, France, Italy, Spain & Portugal), Asia (Indonesia, Japan & South Korea; Philippines — new record), Australia, the Pacific (Hawaii & the Marianas), and America (Puerto Rico & mainland USA).

Notes. The adult weevil was collected on common purslane growing on grounds near Entomology section laboratory, Institute of Plant Breeding, College of Agriculture and Food Science, University of the Philippines Los Baños (Figs. 3 & 4). Several mines formed by weevil larvae in the common purslane leaves were found at the same time (Fig. 5). The larvae are considered to be conspecific with the adult since there are no other leaf-mining weevils known to be associated with *P. oleracea*. This weevil is native to the Mediterranean countries (MCFADYEN, 1994) and therefore might have been introduced to the Philippines from its neighboring regions, as had already been done to Australia.



Figs. 1–5. *Hypurus bertrandi* from Luzon, the Philippines. — 1, Dorsal habitus; 2, lateral habitus; 3–5, habitat and host plant of *H. bertrandi* in Los Baños, Laguna (3, habitat; 4, *Portulaca oleracea* (common purslane); 5, mines of weevil larvae in common purslane leaves).

References

- CABI, 2017. *Portulaca oleracea* (purslane) [original text by anonymous author]. In Invasive Species Compendium (www.cabi.org/isc). CAB International, Wallingford, UK.
- COLONNELLI, E., 2004. Catalogue of Ceutorhynchinae of the World, with a Key to Genera (Insecta: Coleoptera: Curculionidae). 124 pp. Argania edition, Barcelona.
- MCFADYEN, R. E. C., 1994. Two new insects from *Portulaca oleracea* L. in Australia. *Journal of the Australian entomological Society*, **33**: 43–44.
- MORIMOTO, K., 1984. Curculionidae. pp. 269–345 [incl. pls. 53–68]. In HAYASHI, M., K. MORIMOTO & S. KIMOTO (eds.), *The Coleoptera of Japan in Color*, **4**. 438 pp. Hoikusha, Osaka. (In Japanese, with English book title.)
- PERRIS, E., 1852. Seconde excursion dans les Grandes-Landes (Lettreadressée à M. MULSANT). *Annales de la Société Linnéenne de Lyon*, **2** [1850/1852]: 145–215.
- REY, C., 1882. Note sur le *Ceuthorhynchus Bertrandi* PERRIS constituant un genre nouveau. *Revue d'Entomologie*, **1**: 186–189.

Manuscript received 31 August 2017;
revised and accepted 10 November 2017.