

New Distribution Records for Two Soldier Beetles (Coleoptera, Cantharidae) from Shikoku, Southwestern Japan

Naoki TAKAHASHI¹⁾ and Eiji YAMAMOTO²⁾

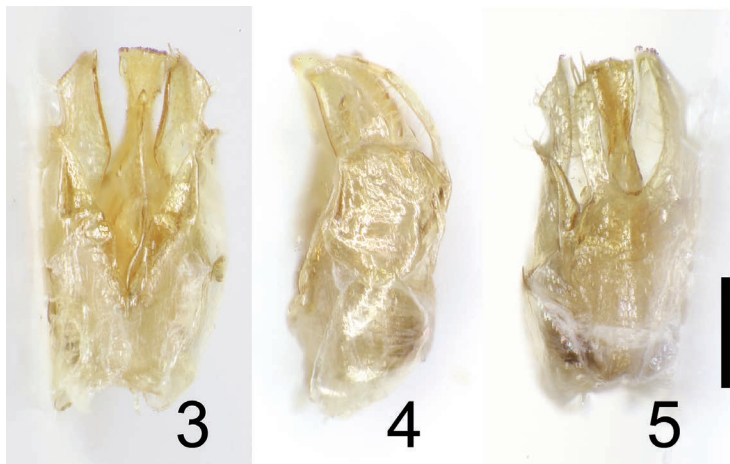
¹⁾Entomological Laboratory, Faculty of Agriculture, Kyushu University, Fukuoka, 812–8581 Japan

²⁾Yamamoto Institute of Forest Biology, Yoshinokawa 1127, Uchiko-cho, Ehime, 791–3511 Japan

For more than 30 years, the second author, YAMAMOTO, has conducted field surveys to elucidate the insect fauna of Ehime Prefecture, northwestern Shikoku, southwestern Japan. Among the materials recently collected by YAMAMOTO (EYC) and the insect collections of the Kurashiki Museum of Natural History (KURA) and M. SATŌ (MSC, will be preserved in the Ehime University Museum), we found two cantharid species that have been known only from Kyushu to date. The new distributional records for these species are represented in this short report. We would like to thank the late M. SATŌ and Y. OKUSHIMA (KURA) for permission to access the materials under their care.



Figs. 1–2. Habitus of cantharid species new to Shikoku, dorsal view. — 1, *Asiopodabrus (Asiopodabrus) uedai* (NAKANE et MAKINO); 2, *Malthodes simplipygus* WITTMER. Scales: 1.00 mm.



Figs. 3–5. Male genitalia of *Asiopodabrus (Asiopodabrus) uedai* (NAKANE et MAKINO). — 3, Ventral view; 4, lateral view; 5, dorsal view. Scale: 0.25 mm.

1. *Asiopodabrus (Asiopodabrus) uedai* (NAKANE et MAKINO, 1989)

(Figs. 1, 3–5)

Specimens examined. [Shikoku: Ehime Pref.] 2 ♂♂ (EYC), Yoshinokawa, Uchiko-cho, 25–30.IV.2010, E. YAMAMOTO leg., by flight intercept traps.

Distribution. Japan: Shikoku and Kyushu. – New to Shikoku.

Note. Although the body coloration of the specimens examined here seemed more yellowish than that referred to in the original description (particularly so on the elytra), we regard them as conspecific with this species based on the genital configuration (Figs. 3–5).

2. *Malthodes simplipygus* WITTMER, 1954

(Fig. 2)

Specimens examined. [Shikoku: Ehime Pref.] 1 ♂ (MSC), Yanadani, Komi, 6–8.V.1994, OHBAYASHI, NISHINO & OKADA leg.; 1 ♀ (KURA), Odamiyama, 5.VI.1994, M. SATÔ leg.; 1 ♂ (KURA), Cape Koumo, N32°54'25"/E132°28'43", ca. 150 m alt., Ainan Town, 5–6.V.2008, T. KURIHARA leg.; 1 ♂ (EYC), Shiroyama, Matsuyama-shi, 1–10.V.2011, E. YAMAMOTO leg., by a Malaise trap.

Distribution. Japan: Shikoku and Kyushu. – New to Shikoku.

Manuscript received 2 March 2018;
revised and accepted 27 March 2018.