

Occurrence of *Pachyrhynchus croesus* OBERTHÜR (Coleoptera, Curculionidae, Entiminae) on Salibabu Is., the Talaud Isls., Indonesia

Hiraku YOSHITAKE

Institute for Agro-Environmental Sciences, NARO, 3-1-3 Kannondai, Tsukuba, Ibaraki, 305-8604 Japan

Pachyrhynchus croesus was originally described by OBERTHÜR (1879) from “iles Sanghir”. Later, SCHULTZE (1924) and DALLA TORRE *et al.* (1931) noted the range of this species by mistake as “Moluccas, Sangir Island”, but in fact Sangir Is. is a main island of the Sangir Isls. Recently, YOSHITAKE *et al.* (2016) recorded *P. croesus* from Karakelong Is., the largest island in the Talaud Isls., North Sulawesi Province, Indonesia. In this short report, I record *P. croesus* for the first time from Salibabu Is., the Talaud Isls.

Before going further, I thank K. ANDO (Ehime University, Matsuyama), K. IJIMA (Mushi-sha, Tokyo) and M. MARUYAMA (the Kyushu University Museum, Fukuoka) for offering the specimens used in this study, and N. NAKAHARA (Tsukuba) for assistance in preparing the manuscript.

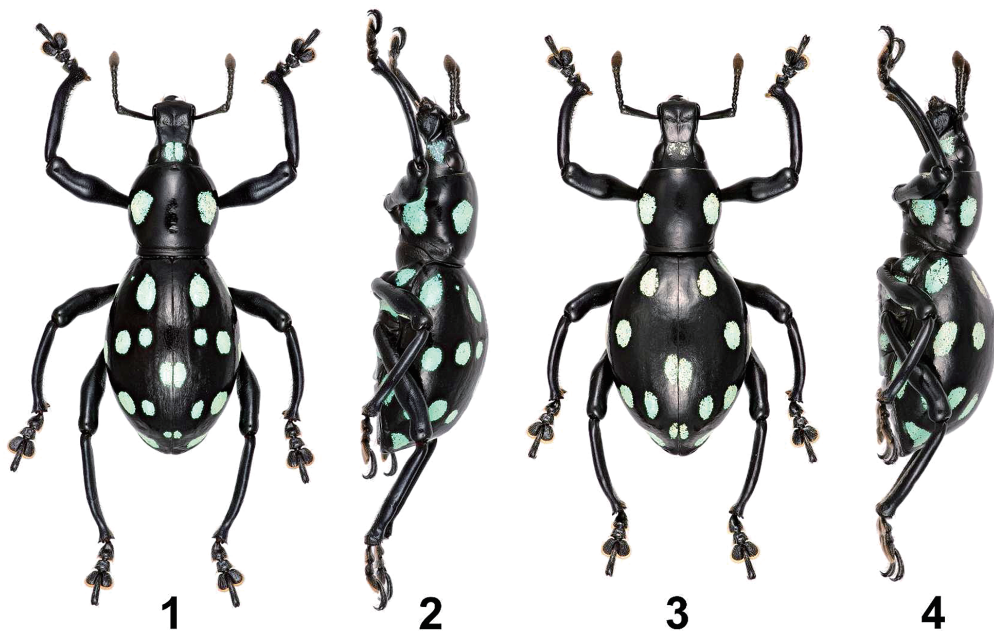
Pachyrhynchus croesus OBERTHÜR, 1879

(Figs. 1–4)

Pachyrhynchus croesus OBERTHÜR, 1879, 570 (type locality: “iles Sanghir”), pl. 1, fig. 2 (dorsal habitus).

Pachyrhynchus croesus: YOSHITAKE *et al.*, 2016, 185 (Karakelong Is.).

See YOSHITAKE *et al.* (2016) for other synonymy.



Figs. 1–4. Habitus of *Pachyrhynchus croesus* OBERTHÜR from Salibabu Is., the Talaud Isls., Indonesia. — 1 & 2, Male; 3 & 4, female. — 1 & 3, Dorsal habitus; 2 & 4, lateral habitus.

Specimens examined. Indonesia: North Sulawesi Province. The Talaud Isls., Salibabu Is.: 4 males and 1 female, Kecamatan Lirung, Musi, 9.I.2017, K. SAKAMAKI leg.; 5 males and 3 females, same locality, I.2017, A. HASRUL leg.; 1 female, Kecamatan Salibabu, Balang, 10.I.2017, K. SAKAMAKI leg.

Distribution. Indonesia: North Sulawesi Province (Sangir Isls.: Sangir Is.; Talaud Isls.: Karakelong Is. and Salibabu Is. – new record).

Notes. In Karakelong Is., this species occurs in a sunny secondary broad-leaved forest located in a lower area than 100 m above the sea level and mingled with clove plantations (YOSHITAKE *et al.*, 2016).

References

- DALLA TORRE, K. W., M. van EMDEN & F. van EMDEN, 1931. Curculionidae: Brachyderinae: Pachyrrhynchini. In SCHENKLING, S. (ed.), *Coleopterorum Catalogus*, (119). 44 pp. W. Junk, Berlin.
- OBERTHÜR, R. 1879. Notes sur quelques Coléoptères récoltés aux îles Sanghir par les chasseurs de M. A. A. BRUUN et description de trois espèces nouvelles. *Annali del Museo civico di storia naturale di Genova*, **14**: 566–572 + 1 pl.
- SCHULTZE, W., 1924. A monograph of the pachyrrhynchid group of the Brachyderinae, Curculionidae: Part I. The genus *Pachyrrhynchus* GERMAR. (Concluded.) *Philippine Journal of Science, Manila*, **24**: 309–366 + 3 pls.
- YOSHITAKE, H., A. SAITO & R. HARTONO, 2016. Records of two Pachyrrhynchini weevils (Coleoptera, Curculionidae, Entiminae) from Karakelong Is., Talaud Islands, Indonesia. *Elytra, Tokyo*, (n. ser.), **6**: 185–187.

Manuscript received 28 February 2018;
revised and accepted 27 March 2018.