

## Occurrence of *Metapocyrtus (Trachycyrtus) adpersus* (WATERHOUSE) (Coleoptera, Curculionidae, Entiminae) in Japan and Singapore

Hiraku YOSHITAKE<sup>1)</sup> and Naomichi TSUJI<sup>2)</sup>

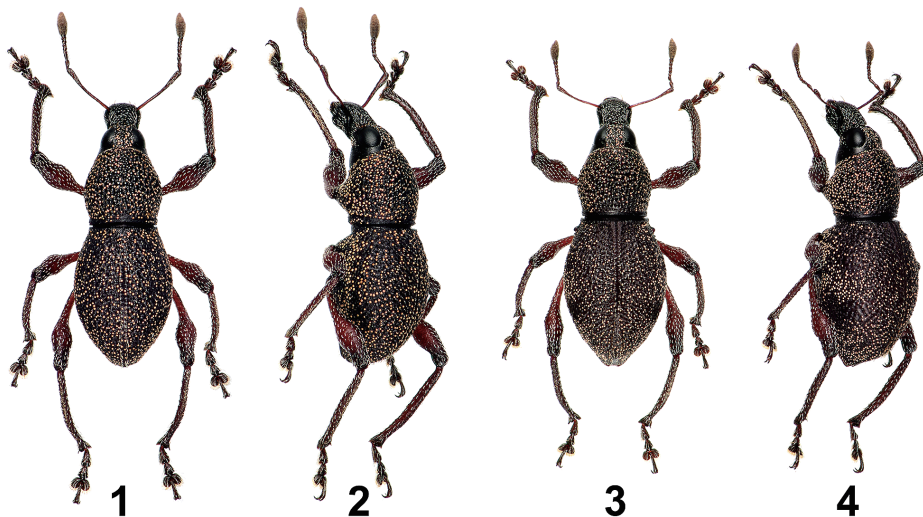
<sup>1)</sup> Kyushu Okinawa Agricultural Research Center (Itoman residence), NARO,  
820 Makabe, Itoman, Okinawa, 901–0336 Japan

<sup>2)</sup> Entomological Laboratory, Graduate School of Bioresource and Bioenvironmental Sciences,  
Kyushu University, 744 Motoooka, Nishi-ku, Fukuoka, 819–0395 Japan

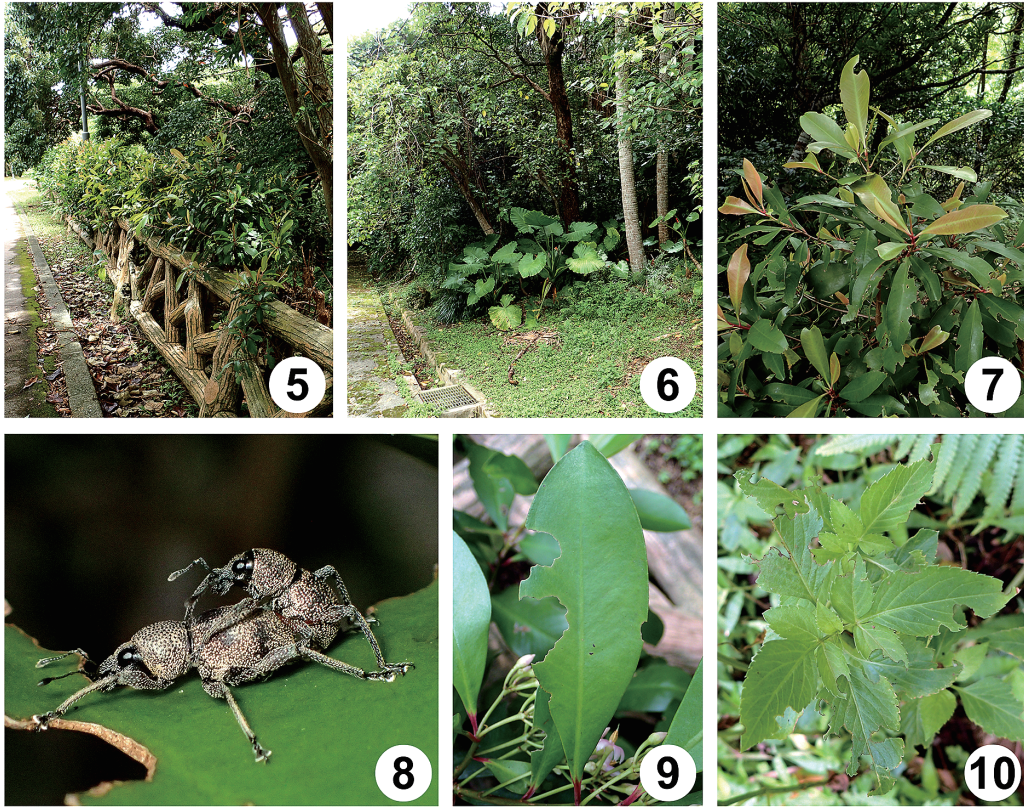
*Metapocyrtus (Trachycyrtus) adpersus* (WATERHOUSE, 1843), which belongs to the tribe Pachyrhynchini, is known to originally occur in Central and Eastern Visayas, the Philippines (DALLA TORRE *et al.*, 1931). YOSHITAKE *et al.* (2016) reported its occurrence in some artificial habitats in Peninsular Malaysia, suggesting that this species is not native to Malaysia but an invasive species. After that, GENKA and YOSHITAKE (2018 a) reported the recent frequent interceptions of this species on vegetables from Malaysia at import plant quarantine in Japan and pointed out relatively high risks of its introduction to and establishment and spread in the country.

Recently, we had an opportunity to examine a long series of specimens of this species, which were collected from Okinawajima Island in the central Ryukyus, Japan. In addition, through the courtesy of H. SHIGETOH (Tomigusuku), we obtained photographs of three *M. (T.) adpersus* adults, which were taken by himself in Singapore during his travel. We here record this species for the first time from both countries.

Before going further, we thank M. MORIGUCHI (Okinawa University, Naha), H. SHIGETOH, K. TAMURA (Iwaki), and T. YORO (Kamakura) for providing invaluable data for this report. We also thank J. YAMASAKO (Institute for Agro-Environmental Sciences, NARO, Tsukuba: NIAES) for constructive comments on the manuscript. The voucher specimens for the occurrence of this species in Japan are stored mainly in the Hiraku YOSHITAKE collection at NIAES and partially in the K. TAMURA private collection. Plant nomenclature follows YONEKURA and KAJITA (2003–).



Figs. 1–4. Habitus of *Metapocyrtus (Trachycyrtus) adpersus* (WATERHOUSE) from Okinawajima Is. in the central Ryukyus, Japan. — 1, Male, dorsal habitus; 2, ditto, dorsolateral habitus; 3, female, dorsal habitus; 4, ditto, dorsolateral habitus.



Figs. 5–10. *Metapocyrtus (Trachycyrtus) adspersus* (WATERHOUSE) in Sueyoshi-kôen, Naha, Okinawajima Is. in the central Ryukyus, Japan. — 5, A habitat with a hedgerow of *Photinia × fraseri*; 6, a habitat with *Bidens pilosa* var. *minor*; 7, a *P. × fraseri* tree; 8, a pair of mating adults on a *P. × fraseri* leaf; 9, adult feeding traces on a *P. × fraseri* leaf; 10, ditto on *B. pilosa* var. *minor* leaves.

***Metapocyrtus (Trachycyrtus) adspersus* (WATERHOUSE, 1843)**

[Japanese name: Bisaya-akaashi-kata-zômushi]

(Figs. 1–4 & 8)

*Apocyrtus adspersus* WATERHOUSE, 1843, 254 (type locality: “Philippine Islands”).

*Metapocyrtus (Trachycyrtus) adspersus*: YOSHITAKE *et al.*, 2016, 193 (records from Peninsular Malaysia). — GENKA & YOSHITAKE, 2018 a, 252 (interceptions at import plant quarantine in Japan); 2018 b, 18 (an interception at Narita International Airport).

*Metapocyrtus (Trachycyrtus)* sp.: MORIGUCHI alias “Geccho”, 2018, 1 (Okinawajima Is.).

See YOSHITAKE *et al.* (2016) for other synonymy.

*Specimens examined.* [Japan] The Ryukyus, Okinawajima Is., Naha, Shuri-sueyoshi-chô, Sueyoshi-kôen: 1 male, 18.V.2018, M. MORIGUCHI leg., on *Morus australis*; 1 male and 4 females, 8.VI.2018, M. MORIGUCHI leg., on *Morus australis*; 23 males and 3 females, 16.VII.2018, N. TSUJI leg., on *Photinia × fraseri*; 18 males and 18 females, 22.VII.2018, H. YOSHITAKE & N. TSUJI leg.; 15 males and 11 females, 3.IX.2018, H. YOSHITAKE leg.; 1 female, 7.XII.2018, M. MORIGUCHI leg., on *Mallotus philippensis*; 10 males and 11 females, 5.I.2019, H. YOSHITAKE leg.; 10 males and 11 females, 28.III.2019, H. YOSHITAKE leg. [Singapore] 3 exs., 1 Cluny Rd., Singapore Botanic Gardens, 14.IX.2018, observed and photographed by H. SHIGETOH.

*Distribution.* Philippines (the Visayas: Bohol, Biliran, Leyte, and Samar). Introduced to Malaysia (Kedah and Pahang) (YOSHITAKE *et al.*, 2016); Japan (the Ryukyus: Okinawajima Is.) and Singapore. — new records.

*Biological notes.* On Okinawajima Island in the central Ryukyus, adults of this species were abundantly found in a park in Naha urban area (Figs. 5 & 6). They were observed feeding on leaves of various plants such as *Photinia × fraseri* (Rosaceae) (Figs. 7–9), *Rosa chinensis* (Rosaceae), *Bidens pilosa* var. *minor* (Asteraceae) (Fig. 10), *Aglaia odorata* (Meliaceae), *Ligustrum japonicum* (Oleaceae), *Mallotus philippensis* (Euphorbiaceae), *Morus australis* (Moraceae), *Murraya paniculata* (Rutaceae), and *Duranta erecta* (Verbenaceae). Judging from the available collecting data, the adults occur throughout the year on the island. In Singapore, three adults were found and photographed by H. SHIGETOH near the Library of Botany and Horticulture at the Singapore Botanic Gardens.

### References

- DALLA TORRE, K. W. von, M. van EMDEN & F. van EMDEN, 1931. Curculionidae: Brachyderinae: Pachyrrhynchini. In SCHENKLING, S. (ed.), *Coleopterorum Catalogus*, (119). 44 pp. W. Junk, Berlin.
- GENKA, M., & H. YOSHITAKE, 2018 a. A list of *Metapocyrtus* weevils (Coleoptera, Curculionidae, Entiminae) intercepted at import plant quarantine in Japan, with descriptions of two new species. *Elytra, Tokyo*, (n. ser.), **8**: 249–262.
- GENKA, M., & H. YOSHITAKE, 2018 b. Chronological change of taxonomic composition of exotic weevils (Coleoptera: Curculionoidea) intercepted in import plant quarantine at Narita International Airport. *Research Bulletin of the Plant Protection Service Japan, Yokohama*, (54): 1–47. (In Japanese, with English title and abstract.)
- MORIGUCHI, M. alias “Geccho”, 2018. [Interesting natural history topics in Okinawa, No. 895: *Metapocyrtus (Trachycyrtus)* sp.] *Wallaby Newspapers, Okinawa Times, Naha*, [29 July 2018]: 1. (In Japanese.)
- WATERHOUSE, G. R., 1843. Descriptions of new species of coleopterous insects belonging to the genus *Apocyrtus*, collected by Hugh CUMING, Esq., in the Philippine Islands. *Annals and Magazine of Natural History, London*, **11**: 247–255.
- YONEKURA, K., & T. KAJITA, 2003–. BG Plants (YList) [online]. Available from: <http://ylist.info> (accessed on 31 March 2019). Iriomote Station, Tropical Biosphere Research Center, The University of the Ryukyus, Uehara.
- YOSHITAKE, H., H. KOJIMA & I. A. GHANI, 2016. Occurrence of *Metapocyrtus (Trachycyrtus) adspersus* (WATERHOUSE) (Coleoptera, Curculionidae, Entiminae) in Peninsular Malaysia. *Elytra, Tokyo*, (n. ser.), **6**: 193–195.

Manuscript received 31 March 2019;  
revised and accepted 10 April 2019.