

First Record of the Genus *Eupiestus* KRAATZ (Coleoptera, Staphylinidae, Piestinae) from Laos

Yoshihiro SENDA¹⁾ and Hiroyuki YOSHITOMI²⁾

¹⁾ c/o Hiwa Museum of Natural Science, Hiwa 1119–1, Hiwa, Shôbara City, Hiroshima, 727–0301 Japan
E-mail: geostix666@gmail.com

²⁾ Ehime University Museum, Bunkyo 3, Matsuyama, 790–8577 Japan

The genus *Eupiestus* KRAATZ, 1859 currently comprises 23 species and is mainly distributed in the Oriental Region (NEWTON, 2020). To date, in the Indochinese Peninsula, *Eupiestus feae* FAUVEL, 1895, *E. sculpticollis* KRAATZ, 1859, *E. spinifer* FAUVEL, 1895 and *E. temporalis* FAUVEL, 1895 have been recorded from Myanmar (NEWTON, 2020), and *E. spinifer* has been recorded from Thailand (YAMAMOTO & NEWTON, 2020).

Eupiestus temporalis was originally described based on a series of specimens collected from “Carin Ghécu” and “Carin Asciuii Ghécu”, Eastern Myanmar (FAUVEL, 1895). Subsequently this species has been recorded from Sumatra, Indonesia (CAMERON, 1928). Hence, this species seems to be widely distributed in the Oriental Region, but its distributional information is not available from Laos. In this paper, we record it from Laos for the first time as the first representative of the genus *Eupiestus* from the country.

The examined specimens are preserved in the following institutions: The Royal Belgian Institute of Natural Sciences, Bruxelles (RBINS), Natural History Museum, London (NHML), and Ehime University Museum, Matsuyama (EUMJ). One of the syntypes preserved in RBINS was examined by photographs in the database of virtual collections (<http://virtualcollections.naturalsciences.be/>). The verbatim label data indicated by double quotation

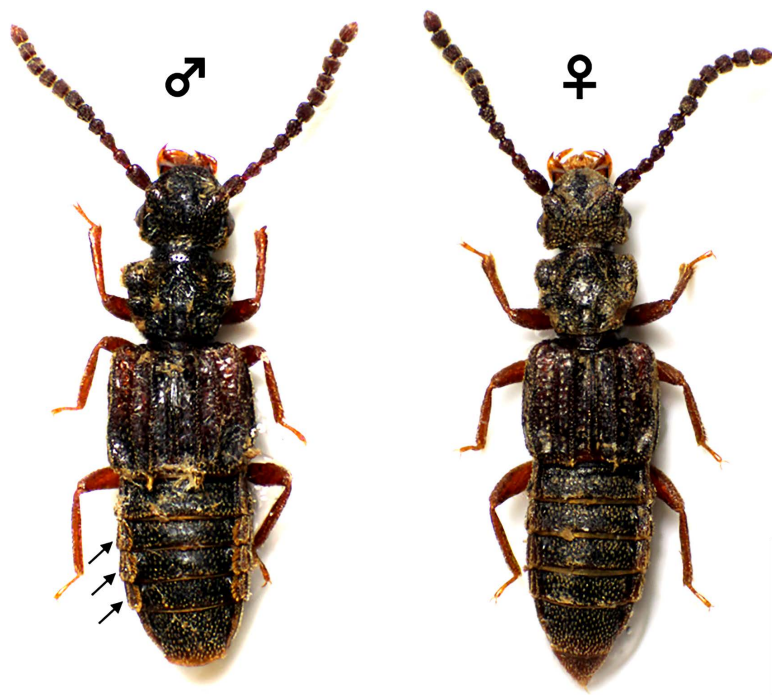


Fig. 1. Dorsal habitus of *Eupiestus temporalis* collected from Laos. Scale: 1.0 mm.

marks (“ ”) are given for the type specimens and the line breaks of the label are indicated by a slash (/).

We are grateful to Dr. Maxwell V. L. BARCLAY and Mr. Keita MATSUMOTO (both NHML) for giving the first author an opportunity to examine the specimens, and to Dr. Shūhei YAMAMOTO (Integrative Research Center, Field Museum of Natural History, Chicago) for providing the important literature.

Eupiestus temporalis FAUVEL, 1895

(Fig. 1)

Eupiestus temporalis FAUVEL, 1895: 188 [original description]. — BERNHAUER & SCHUBERT, 1910: 8 [catalogued]. — CAMERON, 1928: 90 [distribution: Sumatra]. — CAMERON, 1930: 38 [characters; distribution: Myanmar]. — SCHEERPELTZ, 1933: 994 [catalogued]. — HERMAN, 2001: 1784 [catalogued].

Type specimens examined. Syntypes: 1 ♂ (RBINS), “Ex-Typis” [printed on white label], “R.I.Sc.N.B. 17.479 / Eupiestus / Coll. et det. A. Fauvel” [printed on white label, but partly handwritten], “temporalis / FvI” [handwritten on white label], “Carin Ghecù [sic!] / 1300-1400 m / L. Fea II-III. 88” [printed on white label]; 1 ♀ (NHML), “Co- / type” [printed on round label with yellow border], “Carin / Ascii Ghecù [sic!] / 1400-1500 m / L. Fea III-IV. 88” [printed on white label], “Birmah” [printed on white label], “Fry Coll. / 1905.100.” [printed on white label], “Eupiestus / temporalis / F. A.” [handwritten on white label].

Specimens examined. [Laos] 1 ♂, 1 ♀ (EUMJ), LA30: Phou Samsoum, Xieng Khouang Prov., N 19.093731, E 103.464955, alt. ca. 2,048 m, 25–26.IV.2018, H. YOSHITOMI leg.

Distribution. Laos — new record; Myanmar and Indonesia (Sumatra).

Biological notes. The specimens collected by HY were found from a fallen wood (ca. 60 cm in diameter) of a broad-leaf tree in the natural forest.

Remarks. We compared Laotian specimens with the above-mentioned Burmese type specimens, and we could not find any differences between them. This species is distinguishable from the other *Eupiestus* species by the following characteristics: 1) body length smaller than 5.0 mm; 2) head lacking any horn or spine; 3) surface of body matt; 4) postocular part more or less angulate; 5) eyes comparatively large, and somewhat prominent. This species is sexually dimorphic with the males having short brush-like bristles (Fig. 1, indicated by arrows) at the lateroventrites of fourth to sixth abdominal segments.

References

- BERNHAUER, M., & K. SCHUBERT, 1910. Staphylinidae I (Pars 19). In JUNK, W., & S. SCHENKLING (eds.), *Coleopterorum Catalogus, Volumen V. Staphylinidae*. 1–86 pp. Junk, Berlin.
- CAMERON, M., 1928. Fauna sumatrensis. Staphylinidae (Col.). *Entomologische Mitteilungen, Berlin*, **17**: 90–110.
- CAMERON, M., 1930. Coleoptera. Staphylinidae, 1. STEPHENSON, J. (ed.), *The Fauna of British India, including Ceylon and Burma*. xvii + 471 pp. + 3 pls. Taylor & Francis, London.
- FAUVEL, A., 1895. Staphylinides nouveaux de l’Inde et de la Malaisie. *Revue d’Entomologie, Caen*, **14**: 180–286.
- HERMAN, L. H., 2001. Catalog of the Staphylinidae (Insecta: Coleoptera). 1758 to the end of the second millennium. *Bulletin of the American Museum of Natural History, New York*, **265**: 1–4218.
- NEWTON, A. F., 2020. StaphBase: Staphyliniformia World Catalog Database (version Nov 2018) [online]. In ROSKOV Y., G. OWE, T. ORRELL, D. NICOLSON, N. BAILLY, P. M. KIRK, T. BOURGOIN, R. E. DEWALT, W. DECOCK, E. van NIEUKERKEN & L. PENEV (eds.), *Species 2000 & ITIS Catalogue of Life, [2020-01-10] Beta*. Available from: <https://www.catalogueoflife.org/col> (accessed on 20 February 2020). Species 2000: Naturalis, Leiden, the Netherlands.
- SCHEERPELTZ, O., 1933. Staphylinidae VII (Pars 129). Pp. 989–1500. In JUNK, W., & S. SCHENKLING (eds.), *Coleopterorum Catalogus, Volumen VI. Staphylinidae*. 989–1881 pp. Junk, Berlin.
- YAMAMOTO, S., & A. F. NEWTON, 2020. First record of the flat rove beetle genus *Eupiestus* (Coleoptera: Staphylinidae, Piestinae) from Thailand. *Coleopterists’ Bulletin*, **74**: 106–108.

Manuscript received 13 January 2020;
revised and accepted 24 March 2020.