

Four Species of the Subfamily Lamiinae (Coleoptera, Cerambycidae) Newly Recorded from Korea

Seung Hwan OH¹⁾ and Seung Hyun LEE²⁾

¹⁾ 101, Manseung Bld., 149–49, Myeongseong-ro, Cheorwon-gun, Kangwon-do, 269–802 Korea

²⁾ 201–2501, Hyperion Apt., 257, Mokdongdong-ro, Yangcheon-gu, Soeul, 158–724 Korea

Abstract Four lamiine species, *Hirtaeschopalaea nubilus* (MATSUSHITA, 1933), *Xenolea asiatica* (PIC, 1925), *Exocentrus fasciolatus* BATES, 1873 and *Praolia citrinipes citrinipes* BATES, 1884 are newly recorded from Korea.

Introduction

One hundred and thirty species of the subfamily Lamiinae was recorded from Korea in the new Palaearctic Catalogue of Coleoptera (SMENTANA & DANILEVSKY, 2010). We could recently examine four additional lamiine species from Korea, which are *Hirtaeschopalaea nubilus* (MATSUSHITA, 1933), *Xenolea asiatica* (PIC, 1925), *Exocentrus fasciolatus* BATES, 1873 and *Praolia citrinipes citrinipes* BATES, 1884. All the four species have already been known from Japan including the Ryukyu Islands, of which *X. asiatica* and *P. citrinipes citrinipes* were recorded from Jeju-do Island, and the other two species were from the mainland of the Korean Peninsula. In the following lines, we are going to record these species with the detail collecting data.

Hirtaeschopalaea nubilus (MATSUSHITA, 1933)

(Korean name: Huin-mu-nui-mal-chong-su-yeom-ha-neul-so)

(Fig. 1)

Jezohammus nubilus MATSUSHITA, 1933: 347, pl. 4, fig. 6; type locality: Sapporo, Hokkaido, Japan.

Yezohammus [sic] *nubilus*: BREUNING, 1950: 277.

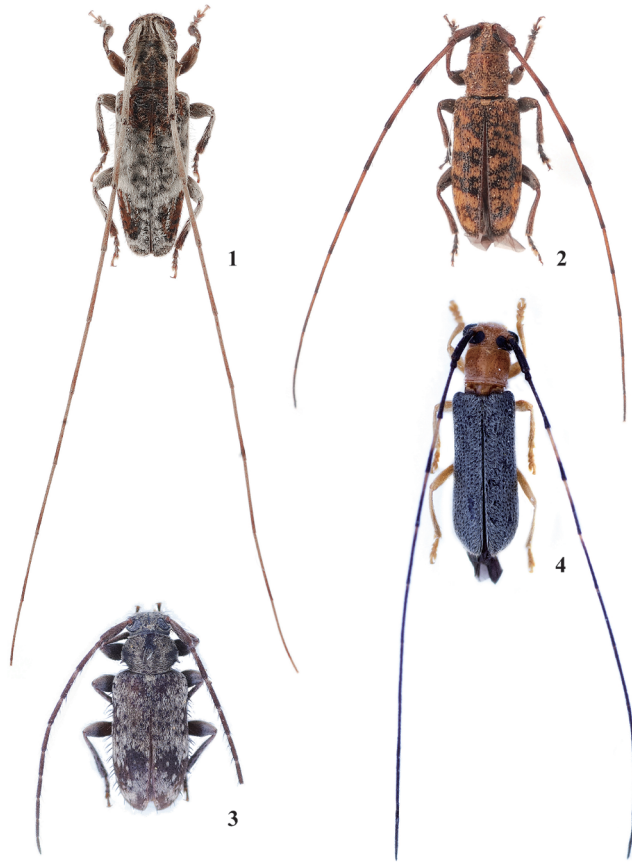
Xenolea nubilus: GRESSITT, 1953: 28.

Hirtaeschopalaea nubilus: N. OHBAYASHI, 1992: 9.

Specimens examined. 1 ex., Osaek-ri, Yangyang-gun, Gangwon-do, Korea, 11–VII–2012, S.-H. LEE leg.; 3 exs., same locality, 8–VII–2013, S.-H. LEE leg.; 1 ex., same locality, 7–VII–2013, S.-H. OH leg.; 4 exs., same locality, 25–VII–2013, S.-H. OH leg.; 1 ex., same locality, 8–VIII–2013, S.-H. OH leg.

Distribution. Japan and Korea (East-central area) (new record).

Notes. This species has so far been known as an endemic to the Japanese Islands. The specimens examined were found on the dead branches of *Picrasma quassioides* (D. DON) BENN., same as the case of its original habitat in Japan.



Figs. 1–4. Lamiine species newly recorded from Korea. — 1, *Hirtaeschopalea nubilus* (MATSUSHITA, 1933); 2, *Xenolea asiatica* (PIC, 1925); 3, *Exocentrus fasciolatus* BATES, 1873; 4, *Praolia citrinipes citrinipes* BATES, 1884.

***Xenolea asiatica* (PIC, 1925)**

(Korean name: Mal-chong-su-yeom-ha-neul-so)

(Fig. 2)

Aeschopalea asiatica PIC, 1925: 16; type locality: Tonkin.

Xenolea asiatica: GRESSITT, 1938: 158.

Xenolea tomentosa asiatica: GRESSITT, 1939: 69.

Xenolea tomentosa: MATSUSHITA, 1933: 347 (nec PASCOE, 1864).

Specimens examined. 2 exs. (larvae), Gamsan-ri, Seogwipo-si, Jeju-do, Korea, 19–IV–2012, S.-H. LEE leg.; 1 ex., Dosun-dong, Seogwipo-si, Jeju-do, 12–VII–2013, S.-H. LEE leg.

Distribution. South China, Taiwan, Japan (West and southwest area) and Korea (Jeju-do) (new record); Oriental Region.

Notes. Two larvae were dug out from the dead branch of *Broussonetia kazinoki* SIEB., and one adult was collected on the dead and dried branch of *Morus alba* LINN.

***Exocentrus fasciolatus* BATES, 1873.**

(Korean name: Gu-reum-mu-nui-kong-al-ha-neul-so)

(Fig. 3)

Exocentrus fasciolatus BATES, 1873: 384; type area: Japan.*Exocentrus curtippennis* PIC, 1918: 10; type area: Japon.

Specimens examined. 5 exs., Osaek-ri, Yangyang-gun, Gangwon-do, Korea, 7–VII–2013, S.-H. OH leg.; 6 exs., same locality, 25–VII–2013, S.-H. OH leg.; 2 exs., Mt. Bokju-san, Cheorwon-gun, Gangwon-do, 30–VII–2013, S.-H. OH leg.; 2 exs., same locality, 13–VIII–2013, S.-H. OH leg.

Distribution. Japan and Korea (new record).

Notes. This species can be easily distinguished from *E. tsushmanus* HAYASHI, 1968 and *E. conjugatofasciatus* TSHEREPANOV, 1973 by the convex sides of pronotum, the dorsal setae in regular row and the grayish pubescent spots on the elytra.

As already indicated by DANILEVSKY (2012, p. 734), the record of *E. fasciolatus* from South China in LÖBL and SMETANA (2010) should be removed. Their record might be based on the record of *E. curtippennis savioi* PIC, 1925 from Jiangxi and Fujian, China by GRESSITT (1951, p. 527) though it is treated as an independent species at present.

***Praolia citrinipes citrinipes* BATES, 1884**

(Korean name: Jaet-bit-kko-ma-gin-ha-neul-so)

(Fig. 4)

Praolia citrinipes BATES, 1884: 261, pl. 2, fig. 8; type locality: Kashiwagi, Nara, Japan.*Praolia citrinipes citrinipes*: N. OHBAYASHI, 1992: 9, 11.

Specimens examined. 6 exs., Jeolmul-oreum, Jeju-si, Jeju-do, Korea, 12–VII–2013, S.-H. LEE leg.

Distribution. Japan and Korea (Jeju-do) (new record).

Notes. Six specimens examined were found under the leaves of *Lindera erythrocarpa* MAKINO.

Acknowledgements

We wish to express our hearty thanks to Dr. Tatsuya NISATO of Bioindicator Co., Ltd., Tokyo and Dr. Michiaki HASEGAWA of the Toyohashi Museum of Natural History, Aichi for their guidance and critical reviewing of the original draft of this paper.

要 約

吳 升煥・李 升鉉：韓国から追加されるフトカミキリ亜科の4種(鞘翅目カミキリムシ科)。——韓国からこれまでに記録のあるフトカミキリ亜科は130種に及ぶ。本論文では、従来、記録のなかったエゾナガヒゲカミキリ *Hirtaeschopalaea nubilus* (MATSUSHITA, 1933), シモフリヒゲナガカミキリ *Xenolea asiatica* (PIC, 1925), クモガタケシカミキリ *Exocentrus fasciolatus* BATES, 1873 およびヒゲナガヒメメリカミキリ *Praolia citrinipes citrinipes* BATES, 1884 を新たに記録した。いずれも琉球を含む日本列島に分布する種である。このうち、エゾナガヒゲカミキリとクモガタケシカミキリは半島部から、シモフリヒゲナガカミキリとヒゲナガヒメメリカミキリは済州島から発見された。

References

- BATES, H. W., 1873. On the longicorn Coleoptera of Japan. *Ann. Mag. nat. Hist.*, (4) **12**: 380–390.
- 1884. Longicorn beetles of Japan. Additions, chiefly from the later collections of G. LEWIS, and notes on the synonymy, distribution, and habits of the previously known species. *J. linn. Soc. London (Zoology)*, **18**: 205–261, pls. 1–2.
- BREUNING, S., 1950. Révision des "Xenoleini". Pp. 271–278, 1 fig. In LEPESME, P. (ed.), *Longicornia*, Vol. 1. 603 pp. Paul Lechevalier, Paris.
- DANILEVSKY, M. L., 2012. Additions and corrections to the new Catalogue of Palaearctic Cerambycidae (Coleoptera) edited by I. LÖBL and A. SMETANA, 2010. Part V. *Inter. Almanac, Moscow*, **1**: 695–741.
- GRESSITT, J. L., 1938. New Longicorn Beetles from China, VI (Coleoptera: Cerambycidae). *Lingnan Sci. J.*, **17**: 151–159.
- 1939. A study of the longicorn beetles of Kwangtung Province, S. China (Coleoptera: Cerambycidae). *Ibid.*, **18**: 1–122, 3 pls.
- 1953. Notes on nomenclature of Japanese longicorn beetles. *Ent. Rev. Japan, Osaka*, **6**: 25–29.
- 1951. Longicorn beetles of China. Pp. 1–667, pls. 1–22. In LEPESME, P. (ed.), *Longicornia*, Vol. 2. Paul Lechevalier, Paris.
- SMETANA, A., & M. L. DANILEVSKY, 2010. Lamiinae (taxa from Korea). Pp. 207–333. In LÖBL, I., & A. SMETANA (eds.), *Chrysomeloidea. Catalogue of Palaearctic Coleoptera*, Vol. 6. 924 pp. Apollo Books, Stenstrup.
- MATSUSHITA, M., 1933. Beitrag zur Kenntnis der Cerambyciden des japanischen Reichs. *J. Fac. Agr. Hokkaido imp. Univ.*, **34**: 157–445, pls. i–v.
- OHYAYASHI, N., 1992. Taxonomic notes on Japanese Cerambycidae (Coleoptera). *Acta Coleopterol. Japon.*, (2): 1–11.
- PASCOE, F. P., 1864. Longicornia Malayana; or, a descriptive catalogue of the species of the three longicorn families Lamiidae, Cerambycinae and Prionidae, collected by Mr. A. R. WALLACE in the Malay Archipelago. *Trans. ent. Soc. London*, (3) **3**: 1–96.
- PIC, M., 1918. Courtes descriptions diverses. *Mélanges Exo.-Ent.*, **27**: 1–24.
- 1925. Nouveautés diverses. *Ibid.*, **43**: 1–32.

Manuscript received 8 November 2013;
revised and accepted 25 November 2013.