

Host Record of *Colobodes ornatoideus* MORIMOTO (Coleoptera, Curculionidae, Molytinae)

Hiroaki KOJIMA, Jun KURIHARA and Chennan ZHANG

Laboratory of Entomology, Tokyo University of Agriculture,
1737 Funako, Atsugi, Kanagawa, 243-0034 Japan

Weevils of the genus *Colobodes* SCHOENHERR, 1837 contain about 30 species from the Oriental and the eastern Palearctic Regions. Biological information of *Colobodes* is known only sporadically. They are stem and branch borers or phloem feeders of dead trees such as Moraceae, Fabaceae, Ulmaceae, Oleaceae and Juglandaceae (MARSHALL, 1936; KALSHOVEN, 1956; MORIMOTO, 1988; LEE & MORIMOTO, 1996).

Colobodes ornatoideus MORIMOTO, 1988 was described based on the specimens from the Izu and the Ryukyu Islands of Japan: Hachijō-jima, Akuseki-jima, Kuchinoshima, Amami-Oshima, Tokunoshima and Okinawa-hontō Is. No biological information is so far known about this species. Recently, senior author collected a number of adults on the recently fallen trunks of *Mallotus japonicus* (Akamegashiwa in Japanese; Euphorbiaceae) on Hachijō-jima Is., and also a number of adults were reared from the trunks in the laboratory (Fig. 1).

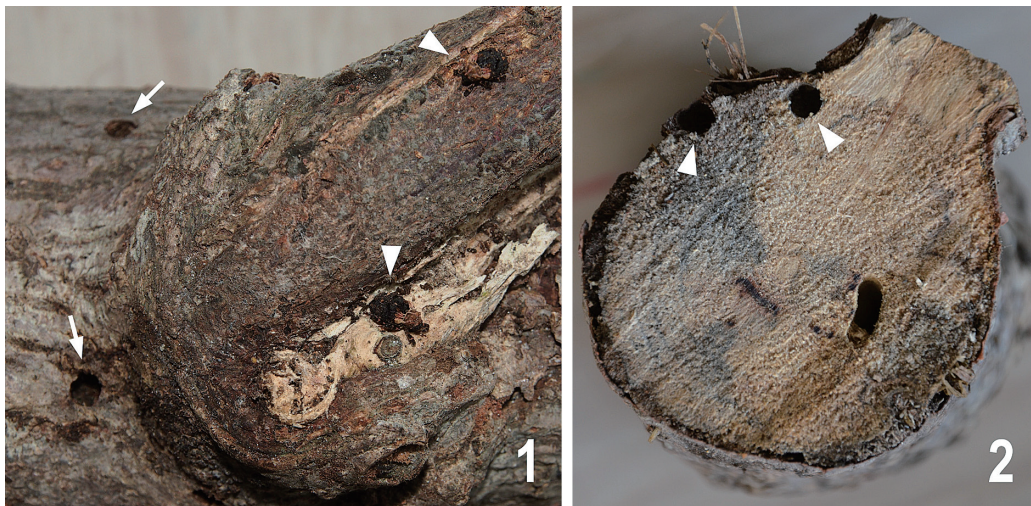
In this short report, we will record a host of *C. ornatoideus* as well as Euphorbiaceae as a host of *Colobodes* for the first time.

The authors thank Dr. K. MORIMOTO for his review of the manuscript. This study is supported by KAKENHI (24510333).

Specimens examined. Izu Islands: Hachijō-jima Is. 2 exs., Kashidate, 16-V-2012, H. KOJIMA; 3 exs., Bōeidōro, 16-V-2012, H. KOJIMA; 1 ex., Nazumado, 18-V-2012, H. KOJIMA; 2 exs., Sueyoshi, 19-V-2012, H. KOJIMA; 10 exs., Jinda, 20-V-2012, H. KOJIMA; 58 exs., 8~23-VII-2012 (reared from trunks); 1 ex., Mihara-rindō, 20-V-2012, H. KOJIMA.

Larval feeding traces were found on the underside of bark of dead *M. japonicus* (Fig. 2).

Some adults were also captured on some stands of *Cinnamomum tenuifolium* (Lauraceae) on Hachijō-jima



Figs. 1–2. Adults and larval habitat of *Colobodes ornatoideus*. — 1, Adults reared from the dead trunk of *Mallotus japonicus* (arrows indicate adult emergence holes); 2, larval feeding traces.

Is. The tree may also be used as a host of *C. ornatoideus*. Further investigation will be required for the confirmation.

References

- KALSHOVEN, L. G. E., 1956. Notes on the habits and ecology of Indonesian forest insects of minor importance III. Curculionidae. *Ent. Berichten*, **16**: 77–88.
- LEE, C.-Y., & K. MORIMOTO, 1996. Larvae of the weevil family Curculionidae of Japan Part. 5. Cryptorhynchinae (Insecta: Coleoptera). *J. Fac. Agric., Kyushu Univ.*, **40**: 333–358.
- MARSHALL, G. A. K., 1936. Curculionidae (Col.) attacking cultivated plants. *Bull. ent. Res.*, **27**: 253–259.
- MORIMOTO, K., 1988. The family Curculionidae of Japan VII. Genera *Colobodes* SCHOENHERR, *Deretiosus* PASCOE and *Deretiosopsis* nov. (Insecta, Coleoptera). *Esakia, Fukuoka*, (26): 39–70.

Manuscript received 8 October 2012;
revised and accepted 9 October 2012.